

The brain has often been called the control tower of the body. This section calls for the care of the control center as if it is separate from our being and a tool of our soul.

These remedies are described in more detail later. This summary of the most common mental problems is for ease of choice and use.

<b>Alzheimer's</b>	<b>Think Clear – ALZ</b>
<b>Alzheimer's (Starting)</b>	<b>Think Clear</b>
<b>Dementia</b>	<b>Lymph Glue</b>
<b>Short-term Memory</b>	<b>Synapse Regeneration Complex</b>
<b>Forgetfulness</b>	<b>Remember, Remember More</b>
<b>Forgetting the date</b>	<b>Thick Brain + Thick Amyloidosis Dissolve</b>
<b>Forgetting Places and Events</b>	<b>Memory Cell Connection</b>
<b>Leaving out letters when writing</b>	<b>Better Thinking 1-3</b>
<b>Getting lost in familiar geography</b>	<b>Thick Brain + Thick Amyloidosis Dissolve</b>
<b>Remembering Names And Faces</b>	<b>Memory Cell Connection</b>
<b>Unable to hold a thought</b>	<b>Brain Tissue Regeneration</b>

**Brain material is divided into several sections to be used as a checklist:**

- (1) Summary of common brain remedies
- (2) Strong Infections
- (3) Brain Infections named diseases
- (4) Brain Diseases (Miasmatic)
- (5) Cerebellum and Brain Stem Diseases
- (6) Emotions causing brain conditions
- (7) Lumps and Bumps in the brain that could become tumors

**Brain infections that confuse, bewilder and are wise to remove before starting any other remedies. These bacterial infections actually reduce all other healing.**

**BRAIN BROIL  
 BRAIN BROIL & SIMMER  
 BRAIN NIBBLE  
 BRAIN CROWD  
 BRUISING PROTEIN NECROSIS  
 BEJEL  
 PINTA  
 YAWS  
 GENITAL HERPES Group**



## **ATTITUDE AND APPROACH IS THE KEY**

The most important part of healing our brain is our attitude. If we assume we are fine and our head is in perfect order, we may as well stop now. If we look at our life and feel we can do more, then we will want to make all of our parts function as well as they can. If we believe that we are a human and believe what Einstein generously said about us using only 10% of our mental potential, then we will rejoice in the opportunity to improve our brain.

The second key to healing the brain is to guide ourselves from our heart and soul. Have the compassion of your heart and the determination of your soul. We will afford ourselves the compassion if we realize that we are consciousness in progress. We are part of whatever we call God and we are part of the improvement of a species. Our soul knows that we have an important task to do. Our very being yearns to do what we came to do. And all of us know how hard it is to do anything when we are tied up.

Healing the mind unties our potential. It helps us accomplish what we came to do, contribute to the world by doing our task and enjoy the profound sense of accomplishment as we do it. Healing our mind is more than healing an organ. It is about our key to consciousness.

## **STRONG INFECTIONS**

Religions and consciousness movements have proclaimed for ages that emotions must be focused and directed towards our goal. Emotions are a product of our chemistry and brain much more than our experiences. The experiences may be varied, but how we choose to interpret and use our experiences is often directed by brain pathways, blood condition, sugar conditions and energy abilities. When we are confused, we can be led by training, outside influences and distorted beliefs. The following information intends to show influences that can confuse the mind and suggest that greater clarity can come from healing these issues. In the end, the information might form a congratulation that we have done so well with what we have had suppressing us.

Several influences lead the pack for brain clearing. The remedies are **Brain Crowd** for Gonorrhea in the brain, **Brain Nibble** for Syphilis in the brain and **Brain Broil** for Leprosy in the brain. There is even a remedy called **Brain Broil and Simmer** for Leprosy complications of tuberculosis. Lesser forms of non-venereal Syphilis are **Bejel**, **Pinta** and **Yaws**. The names of the infections are "loaded" with terrible assumptions and judgments that we must learn to get over. All of them are considered indictments of insanity or worse. Yet they are only spirochete bacterial infections. Just as we have gotten over bacterial infections in other parts of our body, these too can easily be quelled with vibrational remedies. Nothing in the rest of the body heals well when these infections are confusing the control tower.

A disease called Chronic Trauma Encephalitis bruises the brain into a protein deterioration. It was first noticed among football players and/or boxers who had one (or more) too many concussions. We noticed that this could go on to people who had simply had a blow on the head from an accident. Although they don't act "punch drunk" as do the extreme cases, the brain has difficulty functioning. We made **Bruising Protein Necrosis** to antidote the protein and found brains could clear from difficulties the subjects had accepted as normal for them. In fact, the fog lifted dramatically for more people than we expected. The following year we added **Bruising Protein Family Disease** for the inherited effect of the same issue.

In some instances, when the infection is so strong, it is wiser to give a client only the remedy for the brain infection before even presenting a more complicated presentation of other issues to address. The infections make the world look somewhat overwhelming. Presenting a program for helping other parts of the body seems to only add to the overwhelm when these infections are present. For those who started on just these infections, the feedback is about how much better they feel in general, *how much clearer their thinking is* and how much brighter the world looks. When people feel better they are more interested in the next step.

**STRONG INFECTIONS CONTINUED**

Other infections that have major freeing effect are the bacteria **Yersinia Pestis** and **Brucellosis**.

Brucellosis has entered the brain where there is Multiple Chemical Sensitivity. **Chemical and Mold Sensitivity, Chemical Sensitivity, and Mold Sensitivity** all have brucellosis included for its influence on the brain. With each of the preceding three afflictions we commonly find strained relationships with the mother (who usually has brucellosis in the brain also. And yes, we have seen improvements in the relationship with mother after the remedy is finished. Many people have trouble with taking even regular dosages of **C&M SEN**. Often they need **Blood Healer-Sodium/Potassium** to make the process smoother.

The other name for Yersinia Pestis (formerly called Pasturella) is the Bubonic Plague. Like previous issues that had such stigma attached to them, this infection is also reduced to the rightful category of "just a bacteria". The bacteria is more commonly in the blood, lungs or intestines, but has such a strong effect on the body that the brain is weakened and distracted.

Closed head injuries are caused by a jar of the head that caused the brain to hit the skull. Generally the accident causes a brain bruise and frequently it causes a hematoma (**Brain Blob**). They take a long time to heal because no oxygen can get to the area. We recommend Ginkgo Biloba as an herb that increases brain circulation to help the healing. The hematoma is like a blood blister that becomes a tumor, so there is often a Retrovirus with the remedy. Like all brain tumors it is common to find a few Coxsackie "A"s binding the conglomeration. **Shock** often goes with this approach because traumatic injuries often leave shock. Removing brain hematomas and shock helps improve reasoning ability and the whole body in general.

**SUMMARY OF REMEDIES**  
 (with range of mega bottles needed)

<b>BEJEL</b>	1-3
<b>BLOOD HEALER-SODIUM/ POTASSIUM</b>	2-5
<b>BRAIN BLOB</b>	4-6
<b>BRAIN BROIL</b>	1-4
<b>BRAIN BROIL AND SIMMER</b>	1-4
<b>BRAIN CROWD</b>	1-2
<b>BRAIN NIBBLE</b>	1-2
<b>BRUCILLOSIS</b>	1-3
<b>BRUSING PROTEIN NECROSIS</b>	3-9
<b>BRUSING PROTEIN FAMILY DISEASE</b>	5-6
<b>CHEMICAL AND MOLD SENSITIVITY</b>	2-4
<b>CHEMICAL SENSITIVITY</b>	2-4
<b>HERPES INHERITED</b>	2-4
<b>LIFE WISH</b>	1-5
<b>MOLD SENSITIVITY</b>	2-4
<b>PINTA</b>	1-3
<b>SHOCK</b>	2-8
<b>YAWS</b>	1-2
<b>YERSINIA PESTIS</b>	3-5

Genital herpes always goes to the brain and long term (5+ years) genital herpes is already in the brain. Again it is hard to think straight with this infection and again it is wise to remove it as soon as possible. There is a protocol written for genital herpes and its complications. There are indications that **Herpes Inherited** probably has brain implications, but there has been too little time for research so far.

One of the strongest distorters of the mind is AIDS, a subject detailed in another protocol. The infection carries with it a "death wish" that is very physical, more than mental. Healers from many disciplines have come to this same conclusion – the mental infection is almost as serious as the immune infection. We put together **Life Wish**, which may be helpful for more than AIDS infections. It is heart saddening to remember how many conversations we have witnessed where the subject knew the value of the remedies for the disease. Yet the person could not find the time, or the money, or the attention, or the memory to take the remedies. In short, something was making the subject avoid a cure. They all died. Other groups have found solutions to this disease only to meet the same mind distortion.

**These infections are primary. To dissolve these infections is to dissolve some of the largest blocks to a person's brain, personality, emotional comfort, reasoning and healing. They are keys to getting to the consciousness with the subject. We have seen new chapters in lives begin with the ending of these infections.**

**BRAIN INFECTIONS THAT ARE NAMED DISEASES**

Many times an issue is called a disease until the causing infection is found. The following are some of the “diseases” that we think are more infection than disease.

Before science became aware of the condition, many people grew up with conditions that are now considered childhood diseases. A very well-known computer expert is openly afflicted with Asperger’s. Many people are what is now called “high level functioning” Autistic. There are many people who cannot learn well by reading or by hearing which have these functions muffled by a specific form of Phenylketonuria. Look at the many solutions in what we call “Kid Stuff” as possible in adults.

A friend was seriously afflicted with what is now called Attention Deficit Disorder. She took **Phenylketonuria** and **Lead Antidote** and promptly got over the “fidgeties” as she called it. Now she can sit through a class or read books in a way that feeds her mind instead of frustrates her. Do you think her brain has increased its function and freed her to be more of herself?

Most of the “kid stuff” comes from a weak thymus of the mother plus an overload of **Aspartame** from food, with **Phenylketonuria** (ADHD) making the best example.

Philosophically, we must recognize that brain limitation also has a value . . . for a period. Limitations in one way force exercise in another way. When the forced exercise is accomplished, then the brain is ready to be freed. Some people have a sense of how limitation has helped them and often a similar sense of when the lesson is learned. In the grace and compassion vein of thinking, we must realize when this factor is operating.

The symptoms of **Seasonal Affective Disorder** are reversed by eliminating a fungus on the pineal. Yet we have yet to find why some people under the same influence do not get the fungus. It is a prime example of the evidence of a deeper miasm when one person gets an infection that another person does not get when under the same influences. **Two Poles** and **Four Poles** reverse the infections that cause the original “Bipolar Disease”. We must add a note that today the term is used for almost any kind of depression. The insurance companies often do not cover “mental disturbances” but do cover infections. In an attempt to help patients, many doctors now call an issue bipolar when it is not strictly so in order that the person can get medication. The cause of bipolar is not known in medicine.

A few infections become so accepted and so hidden that people simply live with them as normal . . . for them. **Cerebral Malaria** obvious comes from the same parasite that enters the liver causing **Malaria**. **Beriberi Cerebral** obviously comes from the severe deficiency of vitamin B1 called **Beriberi**. **Sunstroke** affects many people who never realize they had it and don’t realize they still have it. **Nocardia Complex** or **Nocardioacea** infect the posterior pituitary to cause motion sickness

Alzheimer’s is one of the most dread diseases of today. Yet we think it comes from the same kind of Thymus weakness that produces childhood diseases. We call Alzheimer’s “adult-onset Autism”. The remedy for those approaching it is called **Think Clear**. For those who have it the remedy is called **Think Clear - ALZ**. There are many causes of dementia that mimic Alzheimer’s which often makes the regaining of memory difficult.

**Penicillin Necrosis** is currently the leading cause that we can find for a condition called Amyloidosis. This tapioca like substance that clogs cells is generated from the liver and is often present with Alzheimer’s. We see the liver infection as a trigger for cataracts as well. We use the remedies called **Thick Brain** and **Thick Amyloidosis Dissolve** to clear the condition in the brain when it causes dementia.

Similar to the Amyloidosis infection is a condition we call Phenylphenoamyloidosis. We have made **Remember**, **Remember More** and **Remember Much More**.

We also believe that these conditions attract the complicating metal, **Aluminum**, instead of aluminum causing the disease. We have made remedies of multiple combinations with Aluminum to clear this metal. We certainly join with the group who find it dangerous to put this in water and tooth paste with fluoride.

**BRAIN DISEASES (MIASMIC)**

Brain Diseases are probably far more plentiful than have been identified so far. They make fertile ground for complicating infections and even tumors. Here are some of the inherited diseases (based on miasms) for which we have designed remedies.

In other material we have described the inherited form of **Bovine Spongiform Encephalitis** called **Creutzfeldt-Jakob Disease**. The neurological disease that affects the brain so strongly is called **Gerstmann-Straussler-Scheinker Disease**. We designed a remedy called **Sleep Balance** for Fatal Familial Insomnia. **Apraxia** is the name of our remedy and the Latin name of the disease. For Pick's disease we designed **Sparky**. For Nieman Pick's disease we designed **Activating Web**. There are several degenerative conditions of the brain nerves that we made remedies for, including **Mind Form** and **Fibril Atrophy Complex** and **Acetylcholine Sclerosis Complex**.

**Cerebral Autosomal Dominant Arteriopathy (C.A.D.A.S.I.L.)** is most like strokes and gradual dementia like memory loss. Mood variations, migraines, mobility problems and palsy are common symptoms.

**Brain Dimple 1** represents a basis for glasses that progresses to mental deterioration-with-shuffle. Along the way thoughts get more negative and border on depression.

In **Transfer Scramble** the subject has transferring incoming signals to outgoing action. For instance, a subject hears a name of a number on the phone and has great problems writing it down. A person hears a word and has difficulty pronouncing it (or remembering it). Words or writing often come out somewhat transposed. **Brain Coordination** is marked by the need to take copious notes just to remember the input. **Hemisphere Hookup** conditions also scramble brain connections. Additionally motor coordination, hearing, taste and smell are often affected.

Both versions of **Astrocyte Nucleus Disease** are nicknamed "Alzheimer's Type 2". We see aspartame as catalyzing this miasmatic condition into brain ammonia and destroying lecithin for brain and other nerves. **Nerve Blood Astrocyte** is for a contraction of brain arteries caused by an astrocyte channel constriction.

Like Alzheimer's and **Asperger's**, (Don't forget to think of **Asperger's** as an adult disease as well as a child's disease). A Thymus Disease causes lymph to stick to and muffle brain cells. We call the remedy **Lymph Glue** and find it a leading cause of dementia. **Synapse Regeneration Complex** serves well as a short-term memory reviver. **Synapse Flow** helps the strength by correcting a disease of the hypothalamus that makes gaps in the flow.

**SUMMARY OF REMEDIES**

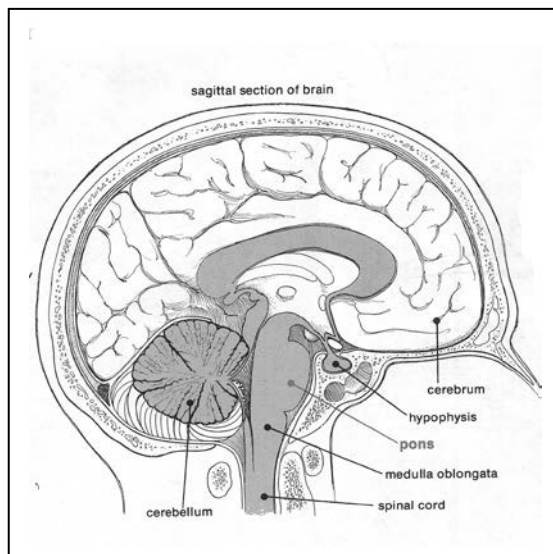
(with range of mega bottles needed)

<b>ACETYLCHOLINE SCLEROSIS</b>	
<b>COMPLEX</b>	5-6
<b>ACTIVATING WEB</b>	3-5
<b>ALUMINUM</b>	2-5
<b>APRAXIA</b>	3-5
<b>ASPARTAME</b>	1-9
<b>ASTROCYTE NUCLEUS DISEASE 1</b>	4-5
<b>ASTROCYTE NUCLEUS DISEASE 2</b>	4-5
<b>BERIBERI</b>	2-3
<b>BERIBERI CEREBRAL</b>	2-3
<b>BOVINE SPONGIFORM</b>	
<b>ENCEPHALITIS</b>	2-5
<b>CEREBRAL AUTOSOMAL</b>	
<b>DOMINANT ARTERIOPATHY</b>	4-5
<b>CEREBELLUM CONSTITUTION</b>	4-6
<b>CEREBELLUM MEDULLARY</b>	3-4
<b>CEREBELLUM NUCLEI ATROPHY</b>	4-6
<b>CEREBELLUM SENSES</b>	
<b>DISEASE</b>	3-6
<b>CEREBRAL MALARIA</b>	2-3
<b>CREUTZFELDT-JAKOB</b>	
<b>DISEASE</b>	3-5
<b>BRAIN COORDINATION</b>	4-6
<b>BRAIN DIMPLE 1</b>	4-5
<b>FIBRIL ATROPHY COMPLEX</b>	4-6
<b>FOUR POLES</b>	2-4
<b>GERSTMANN-STRAUSSLER-</b>	
<b>SCHEINKER DISEASE</b>	3-5
<b>HEMISPHERE HOOKUP</b>	4-6
<b>LEAD ANTIDOTE</b>	3-6
<b>LYMPH GLUE</b>	4-5
<b>MALARIA</b>	2-4
<b>MIND FORM</b>	3-6
<b>NERVE BLOOD ASTROCYTE</b>	3-6
<b>NERVE MUSCLE CONNECTION</b>	4-6
<b>PENICILLIN NECROSIS</b>	4-6
<b>PHENYLKETONURIA</b>	3-4
<b>REMEMBER</b>	3-5
<b>REMEMBER MORE</b>	3-5
<b>REMEMBER MUCH MORE</b>	3-5
<b>SEASONAL AFFECTIVE</b>	
<b>DISORDER</b>	1-3
<b>SLEEP BALANCE</b>	3-5
<b>SPARKY</b>	3-5
<b>SUNSTROKE</b>	1-6
<b>SYNAPSE FLOW</b>	5-6
<b>SYNAPSE REGENERATION</b>	
<b>COMPLEX</b>	4-5
<b>THICK AMYLOIDOSIS</b>	
<b>DISSOLVE</b>	4-6
<b>THICK BRAIN</b>	4-6
<b>THINK CLEAR</b>	4-7
<b>THINK CLEAR-ALZ</b>	4-7
<b>TRANSFER SCRAMBLE</b>	4-5

## CEREBELLUM AND BRAIN STEM DISEASES AFFECTING THE BRAIN

Because the mind is essentially a bundle of nerves there are many nerve diseases that cross over into mental conditions.

The Cerebellum (to be distinguished from the cerebral area) controls much of the motor movements and the central nervous system. Charcot-Marie-Tooth is a prime example of how the motor nerves affect the brain/cognitive nerves. The disease is well known for affecting lower extremities and nerves to muscles. One of its trademarks is its imitation of Alzheimer's. We have traced the disease to multiple people who say their deceased parent was diagnosed with Alzheimer's when they all suspected it was not that disease. One man took it because of exactly that background and noticed a marked improvement of mental function immediately afterwards. We call the remedy **Cerebellum Constitution**. We are exploring a remedy in which the cerebellum is the creator of glia, a connecting nerve fluid of the brain. If **Cerebellum Medullary** proves to be the solution to renewed glia, many a person will regain thinking ability. **Cerebellum Senses Disease** may prove to be the connecting force of strength for ears, smell and even the control of bladder nerves (remember how many people are propelled to urinate at the sound of running water). **Cerebellum Nuclei Atrophy** is for a condition that destroys poorly defined nuclei of the cerebellum including Dentate, Fastigial, Globose and Emboliform Nuclei. (These nuclei energetically test completely separate from the Cerebellum or Cerebrum and have unknown functions to science. **Nerve Muscle Connection** is a cerebellum remedy that aims to restore the making of an enzyme that activates the connection of nerves and muscles after accidents and diseases of the muscles.



The brain stem holds many nerve keys that affect the mind. **Olivoponto Cerebellar Atrophy** is designed to antidote an inherited disease that gradually withers the concentrated nerves in the brain stem. **Olivoponto Nerve Keys** for a disease similar to Hereditary Spastic Paraplegia. **Olivoponto Neurohormone Atrophy Complex** is designed around an unidentified disease that makes people slowly wither in mind and body. Similarly **Olivoponto Necrosis Complex** is for a protein that destroys the Olivoponto center.

There are general conditions that seem to be accepted as aging in the mind that we see as diseases. There seems to be a hardening of the brain stem for some that spurred us to make **Brain Stem Sclerosis**. Likewise we have seen many cases around the issue of memory loss that had to do with the streamers for the main nerves and how they simply disappear. We made **Nerve Capillary Atrophy** to restore those streamers and thereby restore some of the memory connections.

**EMOTIONS CAUSING BRAIN CONDITIONS**

Women are very inclined to believe that emotional dissatisfaction plays a large role in their health. Men tend to focus on what needs to be done instead of how they feel. Both viewpoints have their strengths. We have found very little evidence to support the effect of past emotions, but what we have found is powerful.

A German father has worked hard to prove that emotional experiences leave physical scars in the brain. Using MRI tests he has proven the scars exist and can tell what physical conditions they will cause. In lectures he has repeatedly identified coming diseases just from the pictures of the inside of brains. We found that those scars could be dissolved with remedies and made **Memory Scars**. Herr Hammer's way of trying to heal the scars is a deep, complicated form of digging up the memories and resolving them through reason. Results are spotty. We hope to add a tool to the man's discovery so that more people are healed through that system. We also have questions of why some brains scar and others do not. Perhaps everyone has brain scars or perhaps some people have a miasmatic propensity to scar.

We made **Fear Memory** for locked fears in the hippocampus that may be based solely on this lifetime or may reflect a bleed-through of past life patterns and fears. **Flight/Fright Memory Disease** seems to also relate to memories very deep and traces to the Hippocampus where it affects other body functions. We are exploring the role of this vibration as the cause of an endorphin reverser that may block other endorphins. Endorphins are the tools of positive thinking that many say can heal anything. There is evidence to support the claim, but far too many failures to make the method dependable. The more we find keys to release endorphins, the better positive thinking will work for a greater number of people.

**Parachute 1-4** are remedies designed for one of history's greatest conundrums. Minds, like parachutes, work best when open.

**SUMMARY OF REMEDIES**  
 (with range of mega bottles needed)

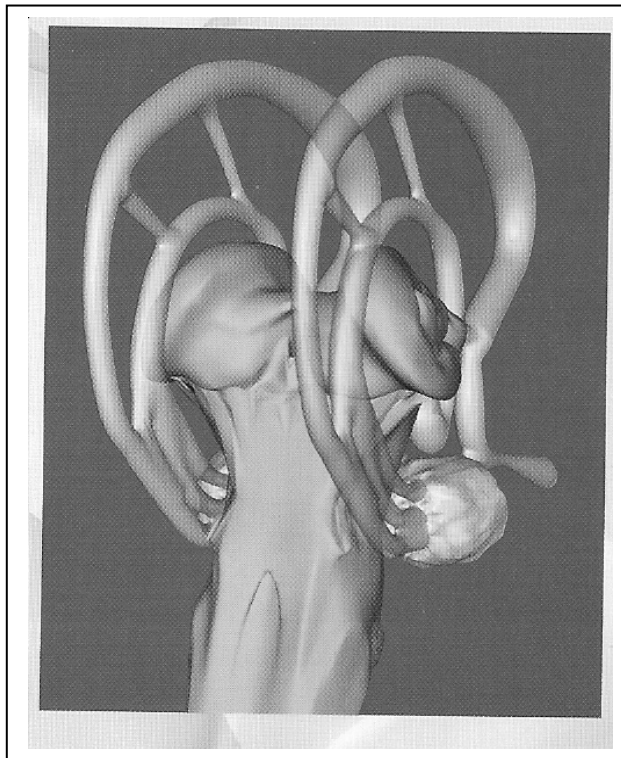
<b>AMYGDALA REGENERATION</b>	<b>4-5</b>
<b>BRAIN STEM SCLEROSIS</b>	<b>5-6</b>
<b>DIABETIC BRAIN 1</b>	<b>5-6</b>
<b>DIABETIC BRAIN 2</b>	<b>5-6</b>
<b>DIENCEPHALON</b>	
<b>ENCEPHALOPATHIA</b>	<b>4-6</b>
<b>FEAR MEMORY</b>	<b>2-5</b>
<b>FIBRIL FORM</b>	<b>4-6</b>
<b>FLIGHT/FRIGHT MEMORY</b>	
<b>DISEASE</b>	<b>6-8</b>
<b>GREY GRAPPLE</b>	<b>5-6</b>
<b>LIMBIC GROWL</b>	<b>4-6</b>
<b>MEMORY SCARS</b>	<b>4-5</b>
<b>NERVE CAPILLARY ATROPHY</b>	<b>4-7</b>
<b>OLIGOGANGLIA COMPLEX</b>	<b>4-6</b>
<b>OLIVOPONTO CEREBELLAR</b>	
<b>ATROPHY</b>	<b>5-7</b>
<b>OLIVOPONTO NECROSIS</b>	
<b>COMPLEX</b>	<b>4-6</b>
<b>OLIVOPONTO NERVE KEYS</b>	<b>4-7</b>
<b>OLIVOPONTO NEUROHORMONE</b>	
<b>ATROPHY COMPLEX</b>	<b>5-7</b>
<b>PARACHUTE 1-4</b>	<b>4-6</b>
<b>SOMOTOSTATIN COMPLEX</b>	<b>4-5</b>

The Borna Virus Combinations, The Consciousness Clearing Combinations and the Destiny Connection Group of remedies all entail emotions of varying depths that affect the brain. The growing Emotional group of remedies also affect the brain in a way that attracts some practitioners to them as the first choice. They interweave with some of the straight infections in a way that guides or drives the brain. We have yet to see this group of remedies heal the brain, yet we have seen people much more comfortable with their lives because of them. That healing cannot be ignored.

The Limbic System of the brain is often called the pleasure center of the brain. Years ago we made **Limbic Zimbic** as a broad spectrum approach to helping all the cells of the system. Few have tried it. We have noticed that the cells of the system are often irritated, especially in what is called "angry Alzheimer's" We made **Limbic Growl** based on encephalopathy of the Amygdala.

A major part of the Limbic System is the mysterious Amygdala. It develops faster than the reasoning part of the brain and is galloping almost out of control in teenagers. The Amygdala helps you act on impulse. The lack of balance to the Amygdala is the physiological reason why most states withhold driver's licenses from kids. We see that this is also one of the parts of the brain that starts deterioration at a very early age in life. Just as the Thymus begins to decline after age 19, so does the Amygdala. We made **Amygdala Regeneration** to help revive the cells in the organ. In the decline, like any organ that declines we see lumps develop the size of pin heads, but very potent. We have no reports of success so far with the remedies called **Amygdaloma**, **Amygdaloma Abandonment**, **Amygdaloma Insufficiency**, **Amygdaloma Violated**. They are based on observation that repeated thoughts will demand more energy from the Amygdala and it develops lumps in an attempt to supply that energy. The lumps lock the thought rather than process it. We may have not got the theory right or there are too few people who understand how and when to use them. They have energetically tested as valuable, so we keep them in the lineup so that someone may learn how to use them.

This may boil down to the Amygdala generating feeling through endorphins and the Hippocampus generating endorphin blockers as a balance of reason. Again, both activities have their value.



**LIMBIC SYSTEM**

Other areas affect personality and attitude. The brain stem may not be fully developed at birth, so we developed **Brain Stem Completion**. Often the signs are seen in childhood that all nerve signals do not go through, whether deductive thoughts or motor coordination.

Later in life we find that the brain stem has a propensity to harden. We developed **Brain Stem Sclerosis** for people having memory problems and occasional coordination problems. This is not the only cause of memory problems.

Polio means grey matter of the nerves, so our common use of this word as a disease really means a virus in the grey matter of the nerves. We have seen some of the lesser-known versions (**Polio Virus #2-#8**) sometimes affect the brain function as well as the motor nerve function.

LUMPS AND BUMPS IN THE BRAIN

The preceding issues lay the groundwork for lumps to grow in the brain. We see lumps appear when an organ or a part of the body is not able to fully function in the way it was designed. It is as if the cells "consolidate" to better function as strong as needed. As we stated in previous material, that usually attracts a retrovirus which turns the lump into a tumor. Tumors grow at different rates and are expected to become cancerous, although it is not clear when the crossover takes place.

One of the most common symptoms of a lump is a headache. The most common cause of migraines is an **Astrocytoma** or an **Astrocytoma Glioma** or an **Astroblastocytoma Glioma** (which includes glioblastoma multiformas). Astrocytes connect white and grey matter of the nerves and are throughout the nerve structure of the brain and brain stem. They often get a strep infection or another infection that weakens them and their very fine structure can easily start lumping. Because they attract a specific retrovirus and Coxsackie virus we were able to put the combination in a formula called **Astrocyte Complex**. We also found that this combination mixed with candida sporotrichosis (**Can SI**) and **Campylobacter** will have panic attacks or "anxiety moments". The same combination leads to anorexia or bulimia.

SUMMARY OF REMEDIES  
(with range of mega bottles needed)

ASTROCYTE COMPLEX	4-5
ASTROCYTOMA	3-5
ASTROCYTOMA GLIOMA	3-5
ACOUSTIC NEUROMA	4-6
BRAIN BLOB	4-6
CHOLESTEATOMA CONGENITAL COMPLEX	5-6
CHORIO ADENOMA	3-5
CHORIO CARCINOMA	3-5
CHORIOEPITHELIOMA	4-6
DURA MENINGITIS	4-6
DURA MENINGIOMA COMPLEX	4-6
EPENDYMOMA	4-6
GERMINOMA	3-5
MENINGIOMA	3-5
MENINGIOMA FIBRO BLASTOMA	3-5
MENINGO FIBRO SQUAMOMA	3-5
MIDDLE EAR MASS	4-6
SCHWANNOMA	3-5
SYNOVIAL PROTEIN REGENERATION COMPLEX	4-6

**Cholesteatoma Congenital Complex** is the inherited parallel to **Middle Ear Mass** tumors starting in the cranium and causing headaches, hearing malfunction and eye pressure

THE LUMPS DESCRIBED BELOW ARE ALSO PICTURED ON THE NEXT PAGE

**Chorio Adenomas**, **Chorio Carcinomas** and **Chorioepitheliomas** are distinctions of the class of lumps that science calls Choroid Plexus Papillomas.

**Ependymomas** have also been detailed and pictured in the Central Nervous System section.

We have previously described **Germinomas** in other areas, with the idiosyncrasy of needing more than one retrovirus. **Synovial Protein Regeneration Complex** may be the cause.

Hemangiomas have been presented in earlier material about nerves. They are usually the result of accidents, form something that is similar to blood blisters and we call the remedy **Brain Blob**.

**Meningiomas** are often seen with **Dura Meningitis** and often have slight complications. We also developed **Meningo Fibro Squamoma** and **Meningo Fibro Blastoma** to cover the nuances.

**Oligodendrogliomas** actually develop from a disease of the same name. The most common indication is prolonged confusion, although other conditions can cause the same symptom.

We find a distinction between an **Acoustic Neuroma** and a **Schwannoma** whereas science calls them both Schwannomas.

**A**

**Germinomas**

- germ cell tumors that are commonly seen in the pineal region (>50%)
- overlie the tectum of the midbrain
- cause obstructive hydrocephalus due to aqueductal stenosis
- the common cause of Parinaud's syndrome

**Brain abscesses**

- may result from sinusitis, mastoiditis, hematogenous spread
- location: frontal and temporal lobes, cerebellum
- organisms: streptococci, staphylococci, and pneumococci
- result in cerebral edema and herniation

**Colloid cysts of third ventricle**

- comprise 2% of intracranial gliomas
- are of ependymal origin
- found at the interventricular foramina
- ventricular obstruction results in increased intracranial pressure, and may cause positional headaches, "drop attacks," or sudden death

**Meningiomas**

- derived from arachnoid cap cells and represent the second most common primary intracranial brain tumor after astrocytomas (15%)
- are not invasive; they indent the brain; may produce hyperostosis
- pathology: concentric whorls and calcified psammoma bodies
- location: parasagittal and convexity
- gender: females > men
- associated with neurofibromatosis-2 (NF-2)

**Astrocytomas**

- represent 20% of the gliomas
- historically benign
- diffusely infiltrate the hemispheric white matter
- most common glioma found in the posterior fossa of children

**Glioblastoma multiforme**

- represents 55% of gliomas
- malignant; rapidly fatal astrocytic tumor
- commonly found in the frontal and temporal lobes and basal ganglia
- frequently crosses the midline via the corpus callosum (butterfly glioma)
- most common primary brain tumor
- histology: pseudopalisades, perivascular pseudorosettes

**Oligodendrogliomas**

- represent 5% of all the gliomas
- grow slowly and are relatively benign
- most common in the frontal lobe
- calcification in 50% of cases
- cells look like "fried eggs" (perinuclear halos)

**B**

**Choroid plexus papillomas**

- historically benign
- represent 2% of the gliomas
- one of the most common brain tumors in patients < 2 years of age
- occur in decreasing frequency: fourth, lateral, and third ventricle
- CSF overproduction may cause hydrocephalus

**Cerebellar astrocytomas**

- benign tumors of childhood with good prognosis
- most common pediatric intracranial tumor
- contain pilocytic astrocytes and Rosenthal fibers

**Medulloblastomas**

- represent 7% of primary brain tumors
- represent a primitive neuroectodermal tumor (PNET)
- second most common posterior fossa tumor in children
- responsible for the posterior vermis syndrome
- can metastasize via the CSF tracts
- highly radiosensitive

**Hemangioblastomas**

- characterized by abundant capillary blood vessels and foamy cells; most often found in the cerebellum
- when found in the cerebellum and retina, may represent a part of the von Hippel-Lindau syndrome
- 2% of primary intracranial tumors; 10% of posterior fossa tumors

**Intraspinal tumors**

- Schwannomas 30%
- Meningiomas 25%
- Gliomas 20%
- Sarcomas 12%
- Ependymomas represent 60% of intramedullary gliomas

**Craniopharyngiomas**

- represent 3% of primary brain tumors
- derived from epithelial remnants of Rathke's pouch
- location: suprasellar and inferior to the optic chiasma
- cause bitemporal hemianopia and hypopituitarism
- calcification is common

**Pituitary adenomas (PA)**

- most common tumors of the pituitary gland
- prolactinoma is the most common (PA)
- derived from the stomodeum (Rathke's pouch)
- represent 8% of primary brain tumors
- may cause hypopituitarism, visual field defects (bitemporal hemianopia and cranial nerve palsies CN III, IV, VI, V-1 and V-2, and postganglionic sympathetic fibers to the dilator muscle of the iris)

**Schwannomas (acoustic neuromas)**

- consist of Schwann cells and arise from the vestibular division of CN VIII
- compromise approx. 8% of intracranial neoplasms
- pathology: Antoni A and B tissue and Verocay bodies
- bilateral acoustic neuromas are diagnostic of NF-2

**Brain stem glioma**

- usually a benign pilocytic astrocytoma
- usually causes cranial nerve palsies
- may cause the "locked-in" syndrome

**Ependymomas**

- represent 5% of the gliomas
- histology: benign, ependymal tubules, perivascular pseudorosettes
- 40% are supratentorial; 60% are infratentorial (posterior fossa)
- most common spinal cord glioma (60%)
- third most common posterior fossa tumor in children and adolescents

There are conditions that affect the whole brain causing deterioration in general. Some are named under previous sections like Brain Diseases Miasmic and Brain Infections. There are some that are so general and little known that they should be mentioned separately.

Some of the conditions start with conditions of the womb. It is well-known that sometimes a child is born with insufficiently developed limbs or organs. Similarly there is a condition of insufficiently developed brain called **Neural Tube Completion**.

**Progressive Multifocal Leukoencephalopathy** and its complication, **Progressive Multifocal Leukoencephalopathy Complex** is a disease of the white matter of the nerves. It could easily invite the viruses of the white matter of the nerves we call **Blanca #1**, etc.. **Blanca Center Control** is similar in its effect of deteriorating the corpus callosum of the brain. **Blanca Grey Lysis** is strange to what we think we know of the brain. The white matter of the brain “eats” the grey matter of the brain. A similar disease of white matter destruction is in **Blanca Deterioration Complex**. Currently known as a horse disease there is a disease known as **Leukoencephalomalacia**. The white matter of the brain nerves gradually soften to a “mush” and the people generally remark about “losing my mind”.

As if there is some balance to the disease, there is also a **Grey Blanca Lysis** where the grey matter “eats” the white matter. The only early sign of this we have seen is that the person talks considerably more than they listen (which is also a sign of heart problems). **Grey Grapple** is aimed at a general degeneration of the grey matter of the nerves that compose so much of the brain.

Since “polio” actually means “grey matter of the nerves”, we include **Polio Deterioration Complex** in addition to previously mentioned polio virus infections.

**Stroke Repair** was designed to reopen closed circulation in the brain after it had closed. The closer to the time of the stroke, the better this remedy works.

**SUMMARY OF REMEDIES**  
 (with range of mega bottles needed)

<b>BLANCA CENTER CONTROL</b>	<b>4-5</b>
<b>BLANCA DETERIORATION COMPLEX</b>	
<b>BLANCA GREY LYSIS</b>	<b>4-5</b>
<b>GREY BLANCA LYSIS</b>	<b>4-5</b>
<b>GREY GRAPPLE</b>	<b>5-6</b>
<b>LEUKOENCEPHALOMALACIA</b>	<b>4-6</b>
<b>NEURAL TUBE COMPLETION</b>	<b>4-6</b>
<b>POLIO DETERIORATION COMPLEX</b>	
<b>PROGRESSIVE MULTIFOCAL LEUKOENCEPHALOPATHY</b>	<b>4-6</b>
<b>PROGRESSIVE MULTIFOCAL LEUKOENCEPHALOPATHY COMPLEX</b>	<b>4-6</b>
<b>STROKE REPAIR</b>	<b>3-7</b>