

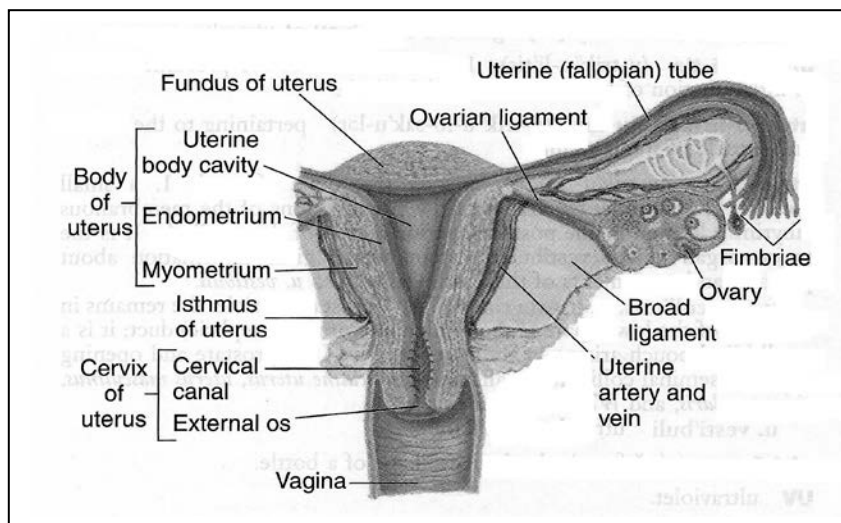
The uterus or the womb is a sacred organ with much symbology. It can have as many physiological problems as any other organ, but its symbology should never be overlooked.

GUIDELINES

Several guidelines have helped to understand the response of the uterus to a woman's life. Problems reflect a self-judgement about the use of the uterus in sexuality, from enjoyment to creation. Regardless of what others think or don't think, the problem is a reflection of self-assessment. When a woman first hears that the uterine problems reflect her own judgements there is often a denial, especially if she contracted a venereal disease from another person. As time goes along, the guideline becomes more of a friend and guide than a self-condemnation. By using the symptoms as a guide towards the unconscious judgements we took on, both the cause and the cure come together in greater understanding.

The legendary Hanna Kroeger said about marriages, "When there are problems at home, they first show up in the woman's uterus". There is a belief that the marriage symbolizes a success or a failure of a woman, instead of simply reflecting our own thoughts. Physically speaking, depletion of the uterus usually traces back to the adrenal glands (where worry first registers).

We are strong advocates of "keeping your parts" and take a dim view of removing a uterus, except in dire emergencies. If removed because of "early menopause" symptoms we find considerable problems from then through the right menopause age (50-52). The real solution to early menopause is in the adrenals.



SUMMARY OF REMEDIES
 (with range of mega bottles needed)

ADRENAL EXHAUSTION-FEMALE	3-5
ADRENAL THYROID FATIGUE	4-5
ADRENAL KEY #1-6 each	4-7
BASILOMA COMPLEX	4-5
BLOOD HEALER	
ENDOTHELIUM	1-4
CAND X	1
CANDIDA GLABRATA	1
CHLAMYDIA	1-3
CHLAMYDIA/GARDNERELLA	1-3
CHLAMYDIA TRACHOMATIS	1-3
ESCHERICHIA COLI	1-4
FIBROADENOMA	4-6
GARDNERELLA	1
HYPOTHALAMUS	
EXHAUSTION FEMALE	4-6
LEIOMYOMA	4-6
LEIOMYOSQUAMOMA	4-6
LNGHSD	5-6
LYMPHOGRANULOMA	3-5
MEMBRANOUS	
CONTRACTUS COMPLEX	5-6
MEN I-V	5-6
MENOPAUSE FEMALE	3-5
MYCOPLASMA HOMINIS	1-2
PAPILLOMA	2-5
RHABDOMYOMA	4-6
RHABDOMYO-	
SQUAMOMA	4-6
SEXUAL SENSITIVITY	4-6
STREP DEFECTIVUS	1
STREP PEPTOCOCCUS	1-2
TRICHOMONAS	1
TB ENZYMES	3-5
TROPHOBLASTOMA	3-5
TROPHOBLASTS CLEARING	4-5

MONTHS OF EXPERIENCE - 154+
APRX # PEOPLE - 5,000+

We have not documented the successes in writing and are now advised estimates are not permitted.

PROBLEMS

Many of the most serious conditions are listed in the paper on Herpes. We consider them as another aspect of infection, but not necessarily the most common of problems.

The most common issue found is the Human Papilloma Virus. HPV is so common that women say their gynecologist often tells them it is so common, that medicine has nothing to cure it and not to worry about it. The symptoms are usually mild and many women only find the issues with a routine PAP smear as a report of "abnormal cell dysplasia". This abnormality can be an early sign of impending uterine cancer. The papilloma can develop towards cancer or remain relatively benign. We disagree about its importance and have steadily eradicated it. The remedy **PAPILLOMA** has very successfully performed since 1996. Because of the common occurrence of cervical warts with HPV, we have included the antidote to cervical warts in the remedy.

FIBROID HOME REMEDY

Hanna Kroeger relayed from Europe a home remedy that has an excellent track record.

Starting 10 days before the expected period, each evening just before bedtime fill two "OO" empty gelatin capsules with unsulfured black strap molasses and insert as high up into the uterus as possible. Use a tampon to hold the molasses in place overnight so that the rich vitamins of the black strap molasses can work on the fibroid area.

The next morning douche with a mild chamomile tea. Usually the fibroids will come out with the period as ropey looking strands.

If the procedure does not work the first try, they often will come out with the second or third month by repeating the process. If they do not come out the third month, there is probably a complication that needs more exacting attention.

Perhaps fibroids have been the second most common issue presented. We are careful not to readily accept the diagnosis because it is often too general. **FIBROADENOMA** has been a very successful remedy and will often present with an accompanying retrovirus because of the propensity for this virus to attract the complication. Fibroids often lead us to complicating lumps and bumps that could develop into tumors. The most common tumor we see is a **LEIOMYOMA** or a **LEIOMYOSQUAMOMA**, usually accompanied by a complicating retrovirus. A variety of other lumps and bumps are possible. The list of applicable remedies for such are shown in our "Lumps and Bumps" chart.

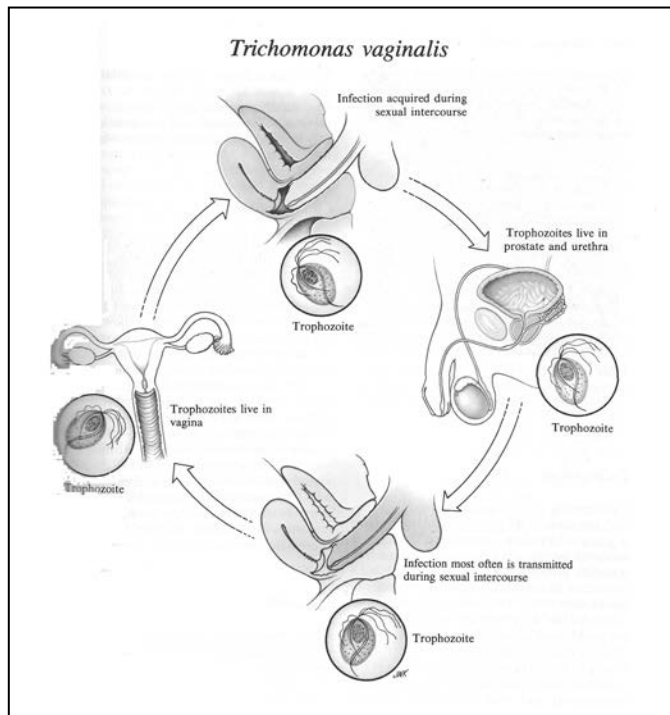
Occasionally we see a **RHABDOMYOMA** or a **RHABDOMYOSQUAMOMA** present with the normal attack on the muscles in the groin. **LYMPHOGRANULOMA INGUINALE** has been successfully addressed since 1996 with a remedy by the same name.

Yeast/candida infections present as thick, white malodorous discharges often with itching. The infections are usually dispelled with **CAND X** for candida albicans. These infections usually are accompanied by candida albicans in the intestines and are more common among women who have diabetes or who have used antibiotics. Candida albicans is usually precipitated by an imbalance in the liver and/or pancreas. We work on these two organs as the solution to candida and often find that yeast infections also easily disappear. If you eat no carbohydrates for 30 days, the condition also has a history of disappearing. **CANDIDA GALBRATA** is sometimes used for post menopause women and is a rare enough remedy that we do not list it on our general User Guide. The most common infections mistaken for candida are:

- (1) **GARDNERELLA** - Often a bacteria without symptoms can turn into a fishy odor and gray discharge, with special vulva irritation and inflammation, especially after coitus and menses. An extension of that infection is a combination with **CHLAMYDIA** called **CHLAMYDIA/GARDNERELLA** which is a splice of the two bacteria, but actually a bacteria in itself. If you have both bacteria separately, this "spliced" bacteria formula will not help. Test energetically for the correct one.
- (2) Endometriosis (caused by **CHLAMYDIA TRACHOMATIS**) - A thickening of the uterine wall that provides for many other growths.
- (3) **TUBERCULOSIS UTERUS** or **TB ENZYMES** TB creates a very similar deterioration of cells.
- (4) **ESCHERICHIA COLI (E.COLI)** - More commonly seen in the irritated vulva of children.
- (5) **MYCOPLASMA HOMINIS** - Often in the vaginal tract and anus at the same time
- (6) Infections from wiping incorrectly can include **STREP DEFECTIVUS**, **STREP PEPTOCOCCUS**.
- (7) **Basiloma Complex**, may develop in the uterus and clitoris

The uterus is the most estrogen-rich organ of the body. Bones and tissue need estrogen to grow, so it makes sense that the amniotic sack for fetus growth is started on the wall of the uterus. To feed the estrogen-rich area are cells called Trophoblasts. When those cells are weak or missing the entire wall of the uterus starts to atrophy. Lumps often grow in this weakened area and all too often the solution has been the removal of the uterus. We developed a formula called **Trophoblasts Clearing** to revive the making of the important nourishing cells. Although science says it is rare, we find it not uncommon to find in this environment a **Trophoblastoma** (usually needing a retrovirus). **BH Endothelium**, a remedy designed for the inside of arteries, also can compromise the endometrium.

We are finding that the gonadotropin hormones that feed the fetus are made by the thymus, not the fetus. There is growing evidence that the nourishment of estrogen comes from the thymus. Therefore it is not surprising to find this same combination on the thymus simultaneously with the uterus. If the lump is simultaneously on the thymus, we commonly find there are three Retroviruses involved.



Trichomonas often presents as a soreness during intercourse that can be so painful that you look for reasons not to have intercourse. Usually the soreness is caused by this parasite. As one lady said, "It feels like a thousand tiny cuts". We see this as a solution to the affliction called "vulvodynia". The remedy **Trichomonas** usually readily dismisses the parasite and the pain. Please remember that parasites only come to an area of the body that is already in trouble. The parasite is often like an indicator of something deeper.

Often we see this parasite with genital herpes and/or sexually transmitted diseases which are covered in another section.

Finally, remember that the uterus may show the symptoms that start in another location. Adrenal issues usually proceed to the ovaries and then the uterus.

If there is a key concept to uterine health, it is in the adrenals glands. If a woman feels like she is in peri-menopause or "early menopause", the solution is to help the adrenals regain health. In 2004 we created the **ADRENAL KEY #1-6** series to help all the reproductive glands. **Adrenal Thyroid Fatigue** also gets straight to the point. In 2007 we made **Adrenal Exhaustion-Female** to help the adrenals survive the demands of the society. (The remedy has so much to do with hormone balance that we include strong advice to female homosexuals NOT to take this remedy for fear it would interfere with current sexual orientation).

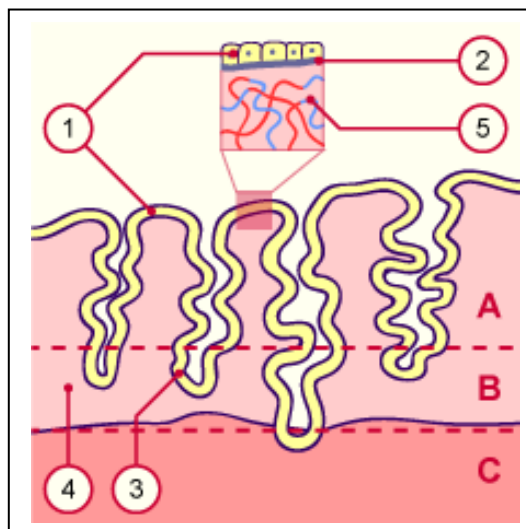
Menopause Female is not so hormonally charged, but again aims at the adrenal effect on the uterus and ovaries. (There are equivalent remedies for males). **Uterus Toning** was created for a nerve control of the uterus in the mid brain (brain stem), especially for prolapsed uteruses. **Sexual Sensitivity** for the axolemma may set the stage for clitoral and prostate cancer. The whole genital area may react to multiple issues of the prostate, from infections to diseases. Accordingly we made **Genital Urinary Sarcoma Complex**.

In another section of our courses there is a special section devoted to the issue of fatigue and tiredness. It goes well beyond the catch-all phrase of "Chronic Fatigue Syndrome" and goes to deep causes. Most of those causes center around the adrenals and their far-reaching effect.

Libido goes downhill as the health of the organs suffers. As the organs recover, **Hypothalamus Exhaustion Female** may help sagging libidos before or after organ problems.

Finally, as a repeat of other sections, be careful of the effect of adrenals on decision making. Tiredness and chronic tiredness usually produce poor decisions. The effect of tiredness is not just a genital upset, but a severe brain upset as well. Emotions often go downhill with adrenal/uterus/ovary problems and make you think the bloom is gone from romance, love and even kindness. To be sure it is an issue for both men and women. We have seen many relationships come back together again by recognizing this one issue and acting accordingly.

A rare find was made with the discovery that the cells of the lining of the Endometrium (Basal lamina - #2 in the drawing) or Epididymis are carried through the blood to nerves. The substance strangles nerves, causes genital problems and can cause debilitating back pains. There have even been cases where the nerves are so contracted that the leg has been drawn upwards, leaving the person limping or debilitated. We made **Membranous Contractus Complex**.



Endometrial layers