

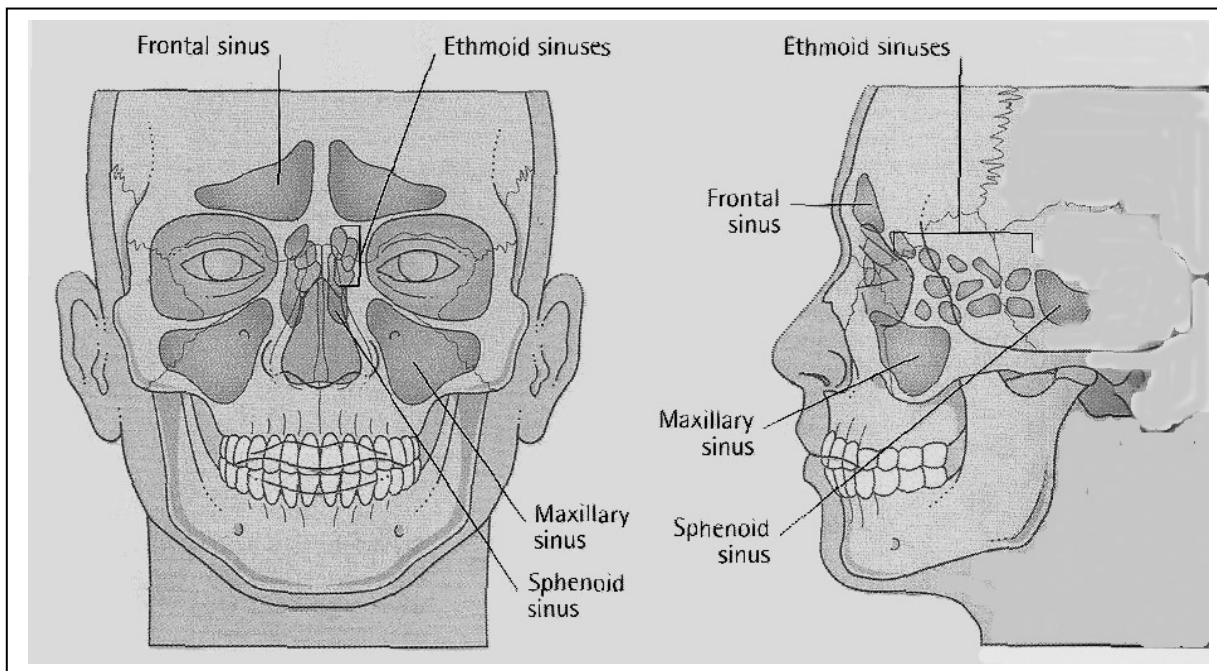
Sinus has several definitions (1) A mucous-lined, air-filled cavity in one of the cranial bones which communicates with the nasal cavity (2) A dilated channel for the passage of blood or lymph which lacks the coats of an ordinary vessel: applied especially to those of the dura, e.g. cavernous sinus. (3) An abnormal fistula or tract.

There are 38 identified sinuses in the body. There are countless "sinusoids" (small sinuses) throughout the body. **For this protocol we will concentrate on the facial sinuses** which are what most people refer to when they speak of sinus problems. The sinuses are an extension of the bones, like small pouches extending from the surface of the bone. They serve as nutrition centers and house-cleaning centers for entering pathogens (bacteria, viruses and fungi).

**SUMMARY OF REMEDIES**  
 (with range of mega bottles needed)

**BASIC FOUR**

<b>BONE DROSS INFECTION</b>	<b>4-6</b>
<b>LYMPHOMA COMPLEX</b>	<b>4-6</b>
<b>MUCOUS WHIPPER ZIPPER</b>	<b>4-6</b>
<b>NOSE FUNGUS/STREP/</b>	
<b>SHIGELLA</b>	<b>1-3</b>
<b>POLYPS NOSE</b>	<b>4-6</b>
<b>TB GROUP BOVINE</b>	<b>4-6</b>



**BONE/LYMPHOMA INFECTIONS**

If the interior of the bones become infected (as commonly happens) the surface of the bones can be infected. We have made remedies for these infections called **Osteoblastoma**, **Osteocarcinoma**, **Osteonecroma** and **Osteosarcoma**. Each of these is accompanied by **RV Bony** for this kind of infection. Since these surface infections represent internal infections, these remedies should soon be accompanied by the remedies shown in the "Basic Four" protocol.

The most common profile of chronic sinusitis involves the onset of a localized lymphoma as described in the protocol for Lymphoma. The lymphoma infection remedies for sinusitis are now in one remedy called **Lymphoma Complex** which includes the above bone infections. **Bone Dross Infection** often accompanies this infection in the sinuses.

The lymphoma infection is the base "garden" for growing nose polyps. **Polyps Nose** works successfully only with the **Lymphoma Complex** and Basic Four remedies.

**TEETH NERVE INFECTIONS**

Infections can enter the sinus via the nerves leading from/to the teeth. In the Big Four we have listed a number of teeth nerve remedies. It is easy to see how infections can migrate from nerves to sinuses in the face.

Although the more common solution comes from the Lymphoma approach, nerve-carried infections account for 40% of the sinus infections. It is common to see both causes in the same person. **Teeth Tuberculosis, Teeth Sinus Fungus and Teeth Strep** are among the most common infections.

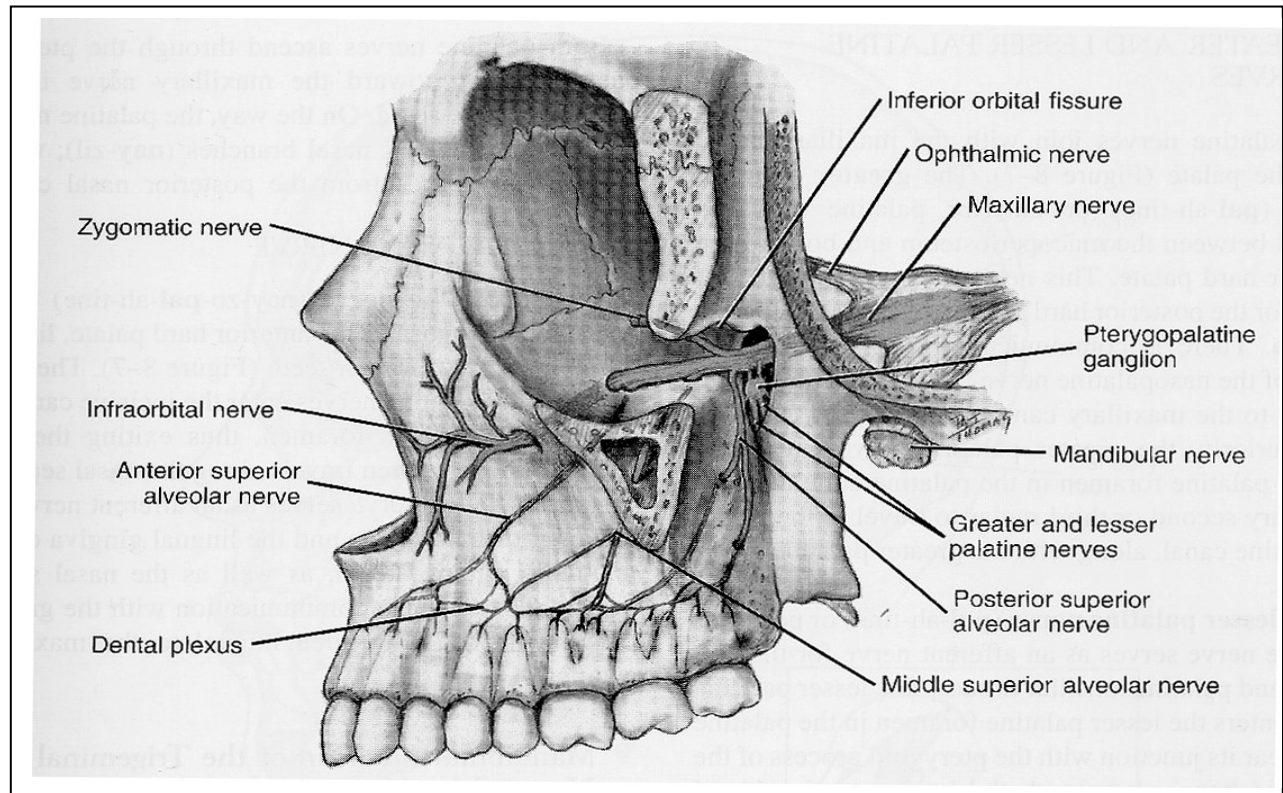
Other remedies decrease the discomfort including: **Alveolar Carcinoma, Gum Pockets, Nose Fungus/Strep/Shigella, Sinus Fungus, Strep, Staph, Staph Aureus #1-5, Swelling Fungus, Teeth Sinus Fungus** and **TB Enzymes**.

See also the lumps that can grow on jaw bones in the Basic Four Section.

**SUMMARY OF REMEDIES**

(with range of mega bottles needed)

ALVEOLAR CELL COMPLEX	3-5
GUM POCKETS	3-5
NOSE FUNGUS/STREP/SHIGELLA	1-3
SINUS FUNGUS	1-4
STAPH	1-3
STAPH AUREUS #1	1-3
STAPH AUREUS #2	1-3
STAPH AUREUS #3	1-3
STAPH AUREUS #4	13
STAPH AUREUS #5	1-3
STREP	1-3
SWELLING FUNGUS	1-3
TB ENZYMES	1-3
TEETH SINUS FUNGUS	2-5



**ALLERGIES FROM LIVER**

Sinususes and allergies often go together. By far the most common allergies come from an infection of the sinusoids of the liver. The remedies that take away 80% of all allergies are **Ergot** and **Enteric Fever**

**SUMMARY OF REMEDIES**  
 (with range of mega bottles needed)

<b>ERGOT</b>	<b>1-4</b>
<b>ENTERIC FEVER</b>	<b>1-4</b>

**LIVER CROSS SECTION**

